






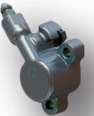









**ENDURO / MX**

**RACE**

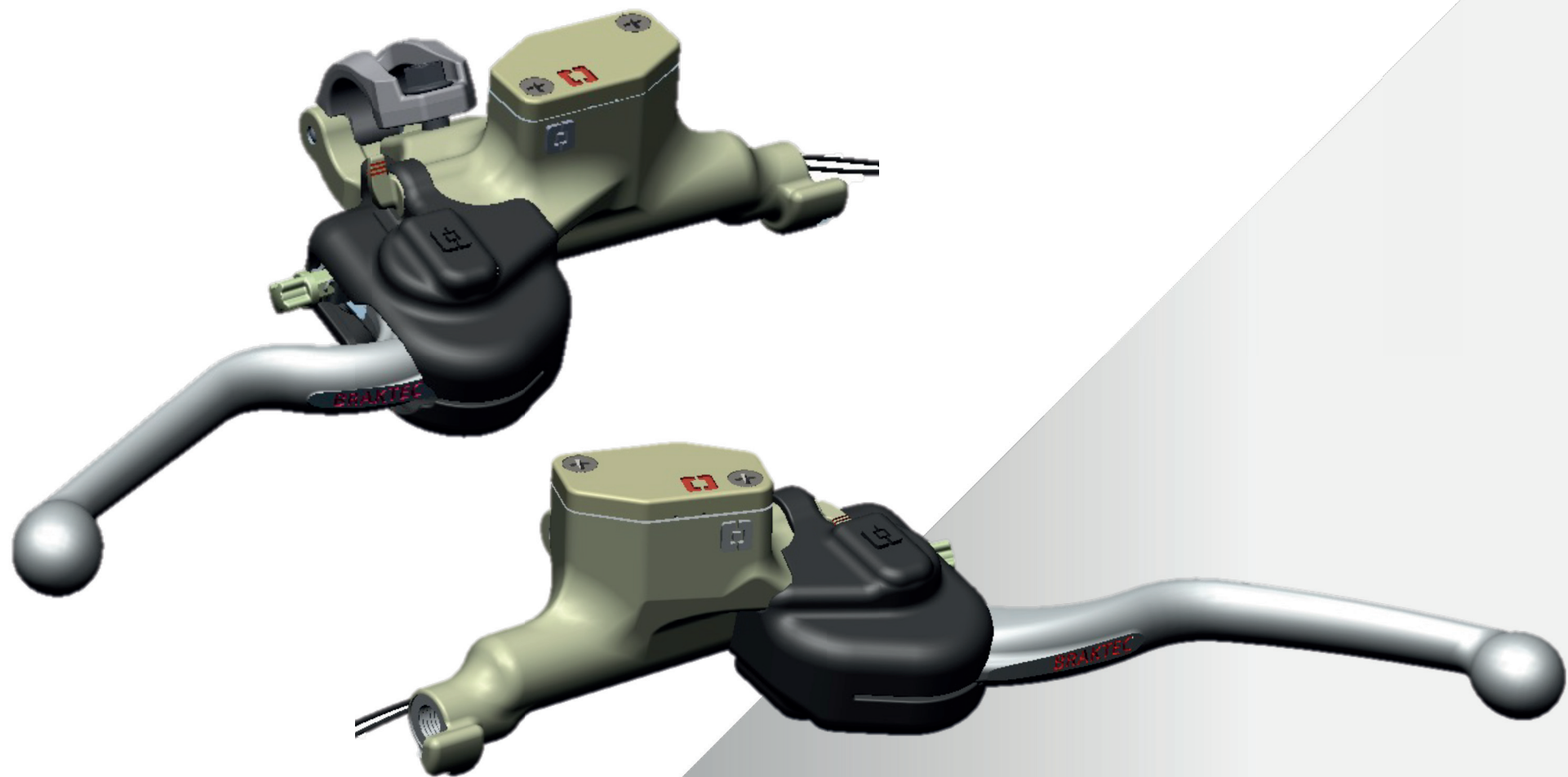
**2 0 2 4**



|                            | JJR-460001MO0  | JJR-364001MO0  | JJR-461001MO0   | JJR-364002MO0   | JJR-463001MO0  | JJR-468002MO0   |
|----------------------------|--|--|---|---|--|---|
| KAWASAKI SX250 / 450       |   |   |  |  |   |  |
|                            |  | TBD  | TBD   | JJR-XXXXXXMO0   |  | TBD   |
| KTM, HUSQ, GAS GAS, SHERCO |   |   |   |  |   |   |
|                            |  | TBD  | TBD   | TBD   |  | TBD   |
| BETA, YAMAHA, HONDA        |  |  |   |   |  |   |



# HMC L & R

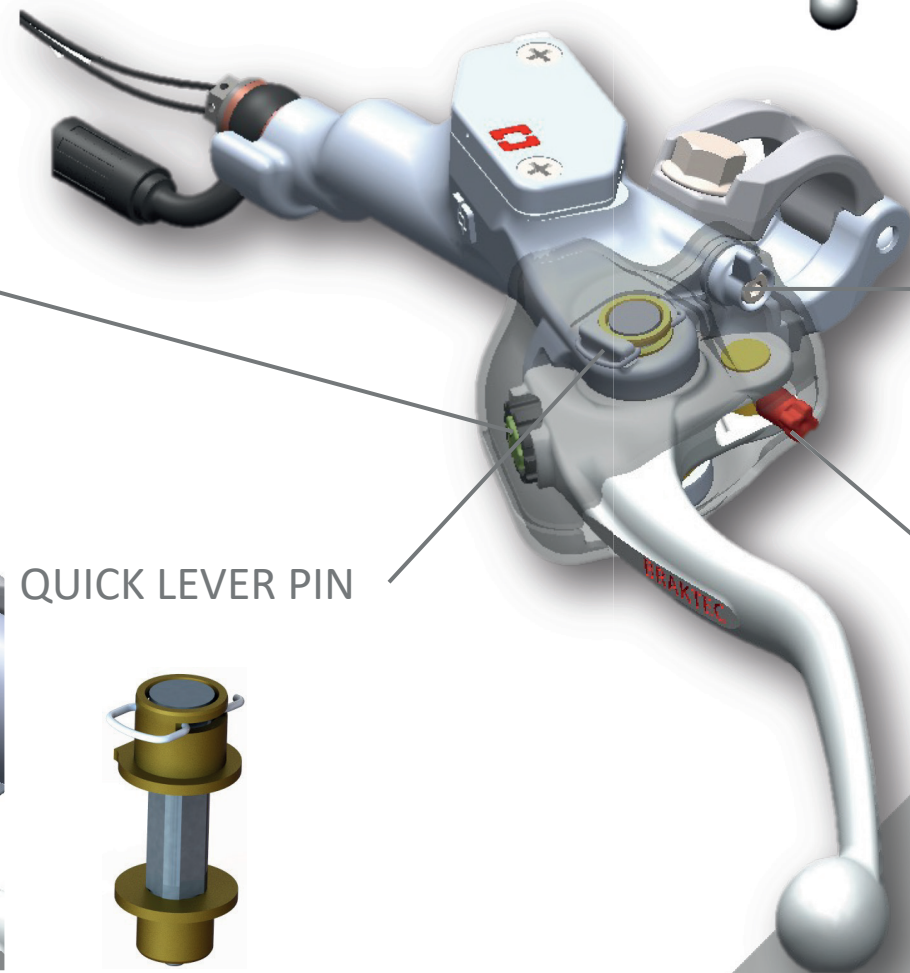
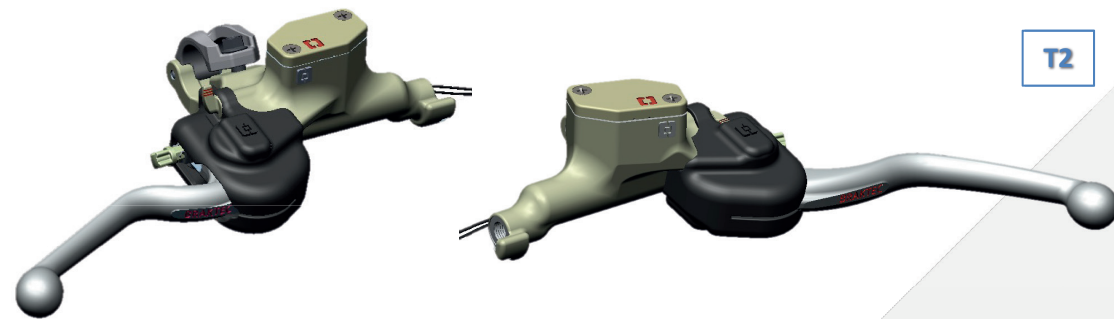




# HMC L & R

RACE performance

T2

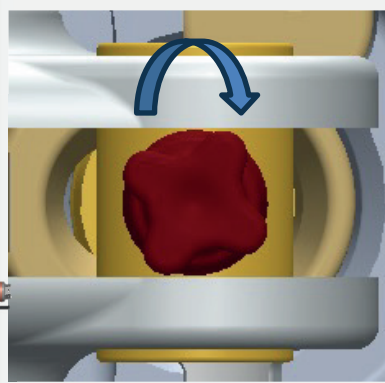
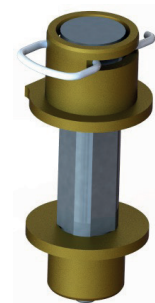
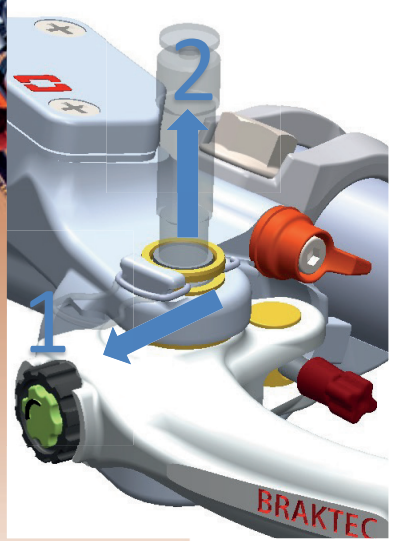
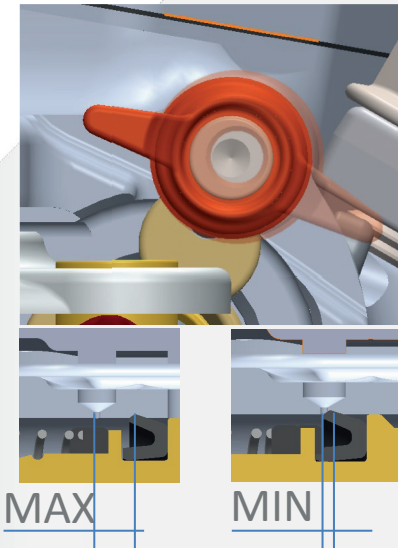
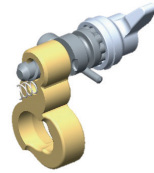
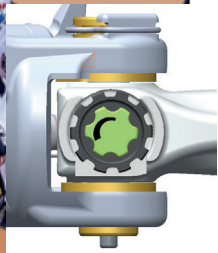


RATIO

IDLE STROKE

QUICK LEVER PIN

LEVER DISTANCE





## FOOT MASTER CYLINDER

JJR-461001MO0

RACE performance

### BLEEDING

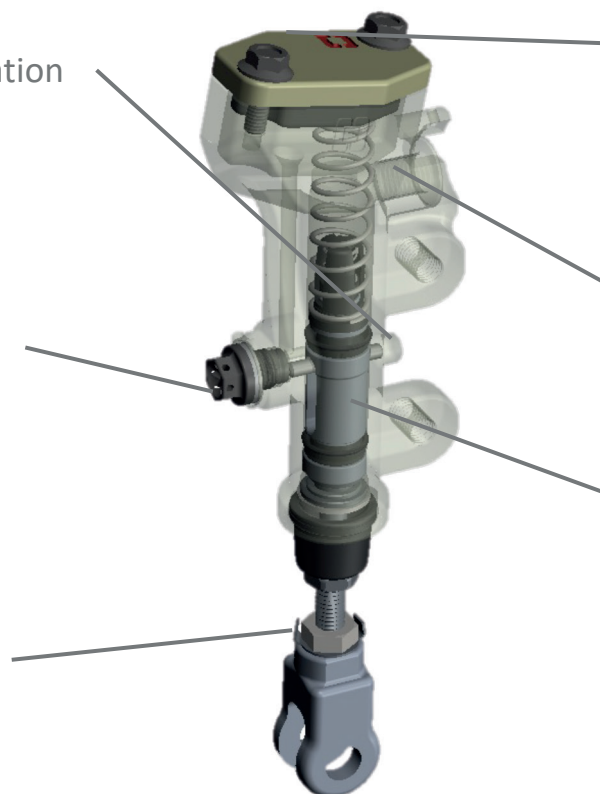
1. Comunitation holes location improved

### MAINTENANCE

1. Screw pin valve optimized
  1. Hex cap 8mm
  2. Weight Reduction
  3. Ti Cap screw
2. Washer sealing
3. Seal wire allowed.

### ADJUSMENT

1. Aesy adjusment
2. Sheet lock



### RESERVOIR

1. Usefull volumen optimized
2. Cap screw hex head for easy Access.

### HIDRAULIC PORT

1. BANJO M8
  1. Weight reduction
2. Seal wire allowed.

### PISTON

1. PORTLESS type



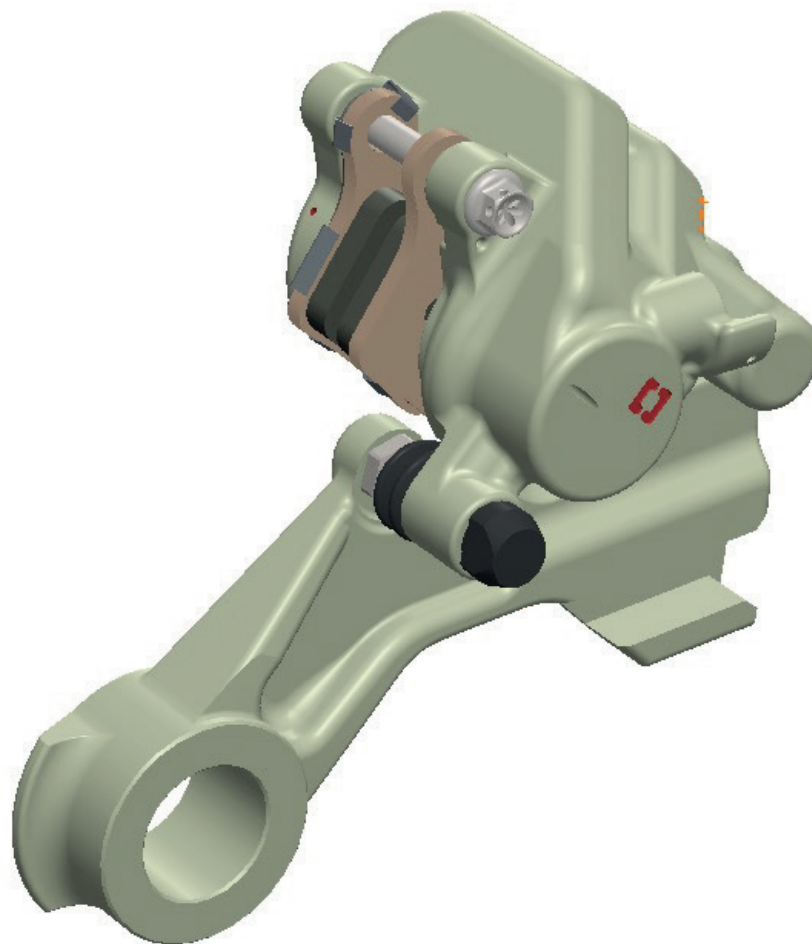
### FEATURES OVERVIEW

1. Weight reduction
  1. Weight reduction
2. Relaiability
  1. Piston
    1. Portless system
    2. Low friction treatment
      1. Hard anodized
3. Handly & maintenance
  1. Adjustments improved
  2. Maintenance improved
4. Security
  1. Sealing solutions applied

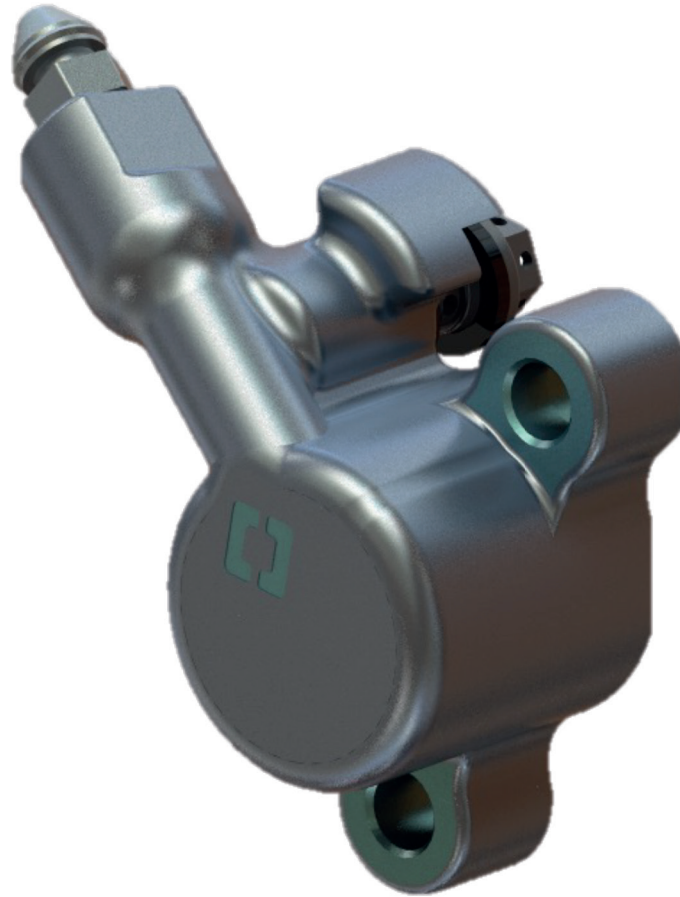




- ❑ **2x22**
- ❑ Stiffness improve
- ❑ More lighter
- ❑ Auto bleeding system
- ❑ Integrated banjo/bleeder
- ❑ Fixation improved Spring pad
- ❑ CNC BODY AA7075 T6 & Hard anodized
- ❑ Larger life without increase free play. CNC
- ❑ Allow for the competition. Over size +10mm (Ø270)
- ❑ Improved Braking feeling and wear pad thank you the new inverted bracket pin PAD Sinterized



- Ø25
- Stiffness improve
- More lighter
- Auto bleeding system
- Integrated banjo/bleeder
- Fixation improved Spring pad
- CNC BODY AA7075 T6 & Hard anodized
- CNC Bracket
- Larger life without increase free play. CNC BRACKTEC;
- Improved Braking feeling and wear pad thank you the new inverted bracket pin PAD



**Ø22**

- Performance improved
- CNC BODY
- Optimized BODY
- Ni Ch + PTFE Surface AA7075 T6
- Piston Hard anodized